

# Point Of Sales - All In One POS

True flat, seamless zero bezel design, full aluminum stable POS terminal, easy operation.





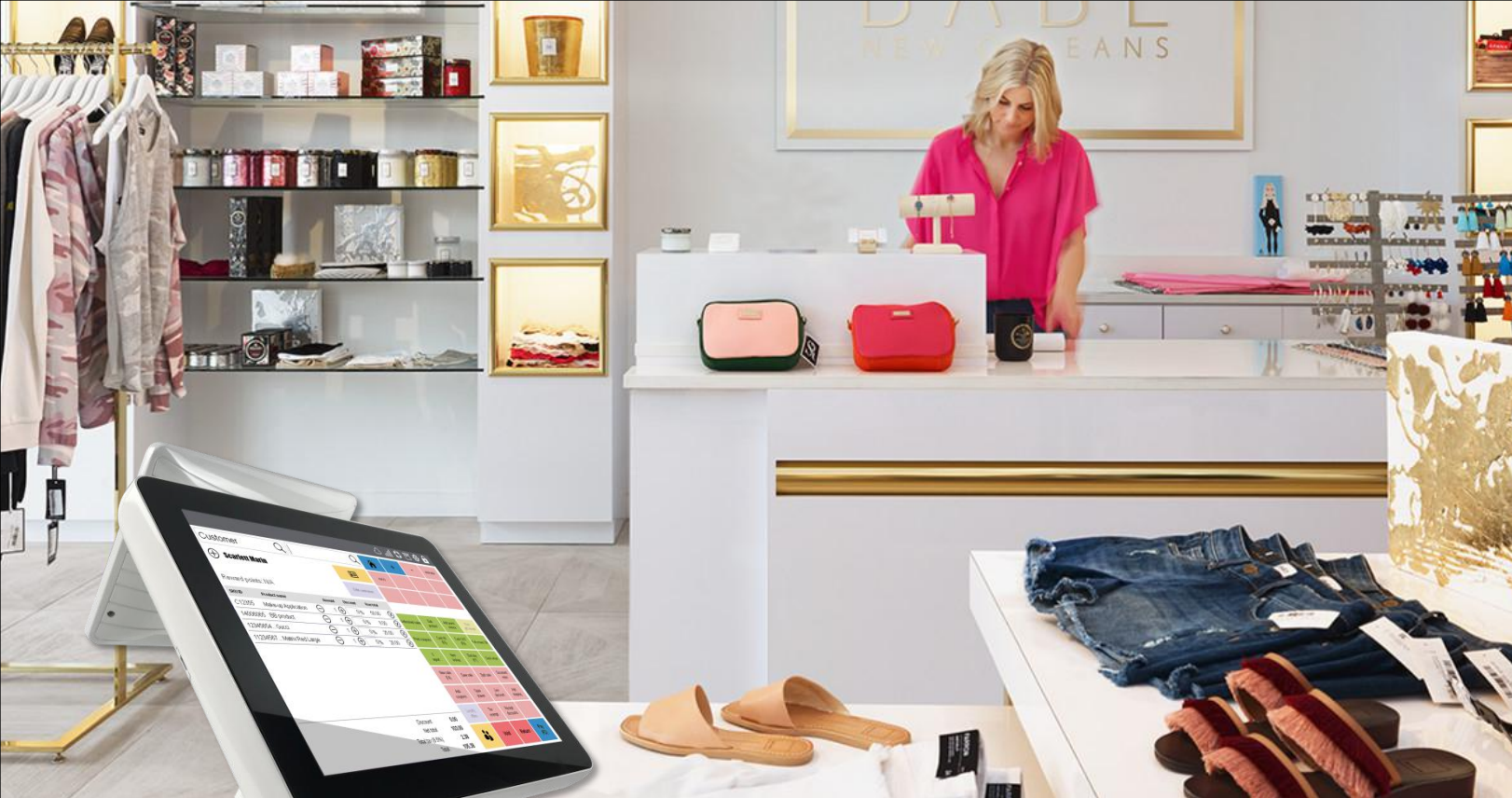
[Point of sales \(POS\) machines](#) are placed in retail or other scenarios to accept the payment.

[TouchDisplays 1515E](#) series Point of sale is a high-end product with proven technologies.

Featured with stable [full aluminum casing](#) and top performance powered by powerful fanless processors and capacitive touch screens.

A wide range of processors options and full compatibility with multiple accessories, make it able to [adapt to all applications](#).



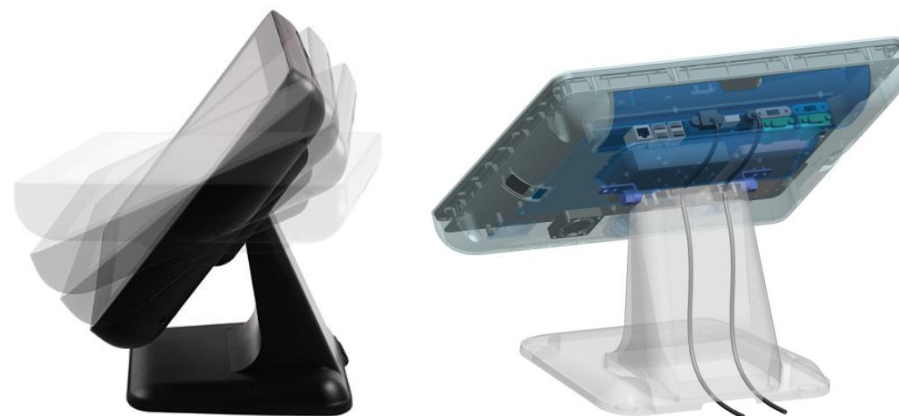


## FEATURE

- Seamless zero-bezel and true flat design
- Fanless, Waterproof and Dustproof
- Highperformance CPU
- Adjustable 90 degree angle
- Support ODM&OEM, 3 years warranty standard
- Multiple I/O for connect with the Peripherals
- High brightness 450 nits (1000 nits optional)

### The Best Viewing

For different staff, the visual angle also different, we've been focusing on this problem, TouchDisplays POS choose the elegant screen, it can be angled up to 90 degrees for easy viewing, best position for operating.



### Front True-flat & Back Full Aluminum Casing

Models available with a seamless zero-bezel design, the TouchDisplays choose the true flat screen, uninterrupted surface area, give you the best viewing, make it easy to clean. The full aluminum casing design, make the most stable POS.



### Waterproof & Dustproof

Default IP 64 for front panel, protecting screens and inside key components against water spilling and dust. Thus it's competent for retail, grocery or restaurant with extreme operating environments.

### Excellent Hidden Cable Management

The POS are required to be connected with a range of peripherals, like printer, cash box etc. Which always makes your desktop messy. TouchDisplays is working on this issue. Manage all cables orderly hidden inside the POS, keeping your cashier's desktop neat.



## Highperformance CPU, HDD and SSD

A high-performance CPU and large memory, up to 8 GB, are combined to provide excellent performance and smooth operation, For mass storage you can choose between HDD and SSD. A powerful and complete retail solution designed for a broad range of deployment scenarios that manage your retail business, win more customers for you.

## Optional Processors

Intel Core i7-4500U , up to i7-7500U.

Intel Core i5-4200U , up to i5-7200U.

Intel Core i3-4010U , up to i3-7100U.

Intel Celeron J1900.

Android:

Rk3288, Rk3399 operation System: From 5.1 to 7.1



## High brightness

The standard brightness 450 nits, up to 1000 nits optional, to fit the outdoor environment, make it possible to work in the sunlight.



## Interface

As the point of sales, it's required to be connected with many peripherals, like printer, cash drawer, etc. Our POS system will streamline your business operations in this field, using the latest developed multiple I/O technology, including USB ports, Rs232, Rj45 ports and more, make it connect to multiple devices flexibly, giving users full new experience.

Optional :

The special quick release design, allows self-maintained customer to easily replace the display module, such as solid-state, Hard Disk.



\* High Brightness 450cd/m<sup>2</sup>

## 3 Years Warranty

Production lifecycle service and support. A three-year limited warranty (except 1 year for LCD panel) comes standard, also support longer warranty if you need, 4 years or 5 years (additionally warranty charge) to fit your needs. Also support convenient, consistent service that helps you run your entire business. with stringent manufacturing standards, ensure it works 24 hours dependable operation.





# APPLICATION



## Catering

- Hotel
- Restaurant
- Fast-food Restaurant
- Coffee Shop
- Bakery and Cake Shop



## Retailer

- Business Street
- Boutique
- Department Store
- Cosmetics Shop
- High-class Barbershop



## Recreation

- Sauna
- Spa
- Night Club
- Theme Park, Cinema
- Casino
- Lottery Ticket
- Cinema

# SPECIFICATION

Model	1515E-IDT
Case/Bezel Color	Black/Silvery/white(Customized)
Display Size	15.0"
Touch panel (True-flat Style)	Projected Capacitive touch screen
Touch response time	8ms (PCT typical)
Touch computers Dimensions	372x 212 x 318 mm
LCD Type	TFT LCD(LED backlight)
Useful Screen Area	304 mm x 228 mm
Aspect ratio	4:3
Optimal (native) Resolution	1024 x 768
LCD panel Pixel pitch	0.297 x 0.297 mm
LCD panel Colors	16.7 million
LCD panel Brightness	450 cd/m <sup>2</sup>
Contrast Ratio	800:1
LCD panel Response Time	30 ms
Viewing Angle	Horizontal $\pm 80^\circ$ or $160^\circ$ total (left/right)
(typical, from center)	Vertical $\pm 80^\circ$ or $160^\circ$ total (up/down)
	Mini D-Sub 15-Pin VGA type and HDMI type
Input interface	2*USB 2.0 & 2*USB 3.0 & 2*COM(3*COM optional) 1*Earphone1*Mic\1(2*RJ45 optional)
Extend interface	2*USB 2.0\2*Sata3.0\2*PCI-E(3G/4G SIM card, wifi 2.4G&5G & Bluetooth module optional)
Power Supply Type	Monitor input: +12VDC $\pm 5\%$ , 5.0 A; DC Jack (2.5 $\phi$ ) AC to DC power brick input: 100-240 VAC, 50/60 Hz Power Consumption: less than 60W
ECM(Embed Computer Module)	ECM2: Intel processor J1800 (Dual Core 2.41GHz,Fanless) ECM3: Intel processor J1900 (Quad-core 2.0GHz/2.4GHz,Fanless) ECM4: Intel processor i3-4030U (Dual Core 1.9GHz,Fanless) ECM5: Intel processor i5-4200U (Dual Core 1.6GHz/2.6GHz Turbo, Fanless) ECM6: Intel processor i7-4510U (Dual Core 2.0GHz/3.1GHz Turbo, Fanless) CPU Upgrade:3855U/3865U & I3-I7 series 5 <sup>th</sup> 16 <sup>th</sup> 17 <sup>th</sup> optional Memory: DDR3 4G(extend up to 16G Optional); Storage:MSATA3 SSD 60G(up to 960G optional) or HDD 500G(up to 2TB optional); Memory: DDR3-1600 4G(extend up to 16G Optional); ECM8: RK3288 Cortex-A17 quad-core 1.8G, GPU:Mali-T764;Operation System: 5.1 or 7.1 ECM10:RK3399 Cortex-A72+Cortex-A53 6-Core 2GHz;GPU:Mail-T860MP4;Operation System: 7.1 Rom:2G(up to 4G optional);Flash:8G(up to 32G optional);
Temperature	Operating: 0°C to 40°C ;Storage -20°C to 60°C
Humidity (non-condensing)	Operating: 20%-80%; Storage: 10%-90%
Shipping Carton Dimensions	450 x 280 x 470 mm(with stand);
Weight (approx.)	Actual: 6.8 kg ;Shipping: 8.2 kg
Warranty Monitor	3 years(Except for LCD panel 1 year)
Agency Approvals	Backlight lamp life: typical 50,000 hours to half brightness CE/FCC/RoHS (UL & GS customized)
Mounting Options	75 mm and 100mm VESA mount(Remove Stood)

# OPTIONAL



Second Display



VFD



Scanner



Card Reader

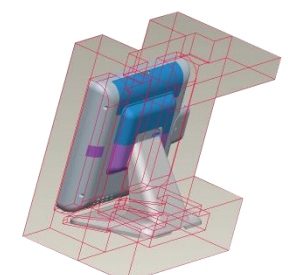
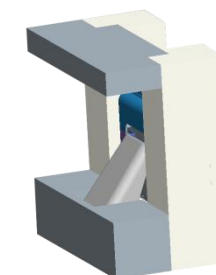
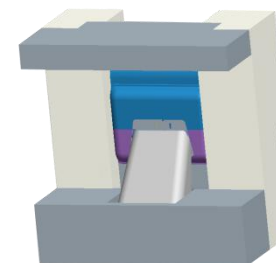


Printer



Cash Drawer

# PACKING DESIGN



**TOUCH  
DISPLAYS**

•Scan me to know more